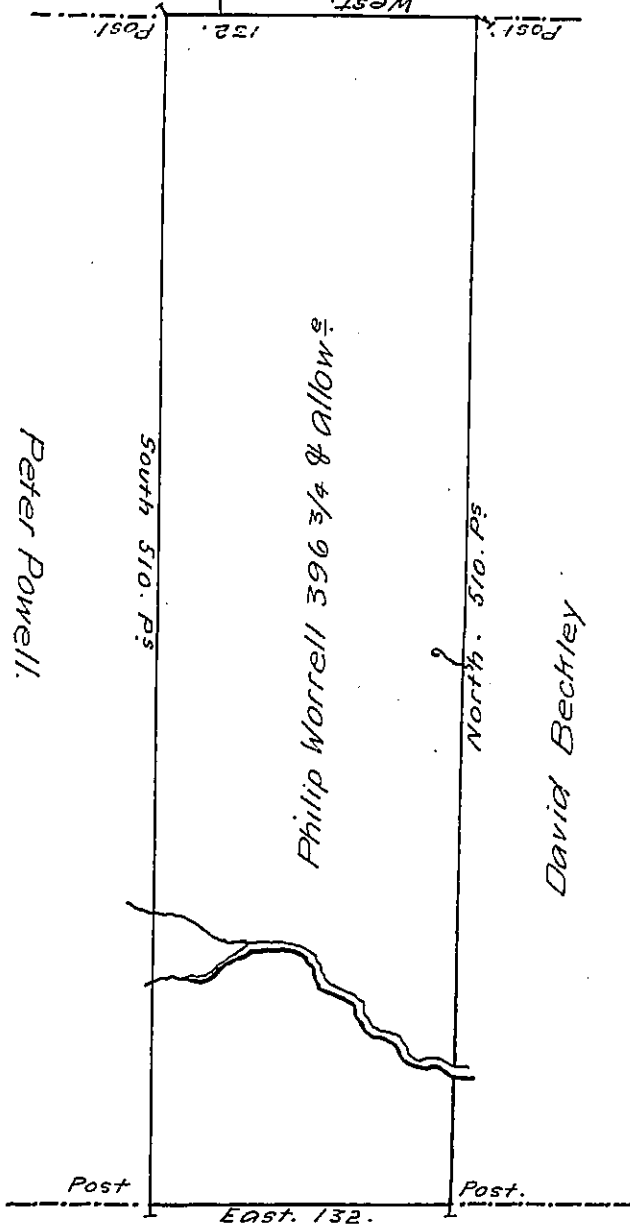


C-160-88

C-160-90



C-186-9

C-160-111

vacant.

Draft of a tract of land Called \_\_\_\_\_ Situate on the waters of Wisock-  
 ing Creek in the County of Northum<sup>d</sup> Containing three Hundred and  
 Ninety Six acres  $\frac{3}{4}$  allowance Surveyed for Phillip Worrell the 20<sup>th</sup>  
 day of Nov. 1784 in pursuance of a warrant dated the 6<sup>th</sup> Day of July  
 1784.

by W<sup>m</sup> Gray D.S.

To John Lukens <sup>Esq.</sup> Surv. Genl.

IN TESTIMONY that the above is a copy of the original remaining on file in  
 the Department of Internal Affairs of Pennsylvania, made  
 conformably to an Act of Assembly approved the 16th day of  
 February 1833, I have hereunto set my hand and caused  
 the Seal of said Department to be affixed at Harrisburg,  
 this first day of May 1907.

*Quaker*  
 Secretary of Internal Affairs.